

Parking Management Software



AP-PRO100

Proytec has developed a Parking Management Software which allows to operate and control the Parking System, interconnecting all its equipment and components. It guarantees data safety and operating speed based on Customer-Server configuration, giving valuable control tools.

Reliability

Soundness is one of the main attributes of the AP-PRO 100 system. Its centralized information management, in addition to its automatic backup features and its information access security, contribute to the system's success in offering the highest data inalterability and the high availability of the system.

Versatility

AP PRO 100 has been conceived using the most advanced development tools, based on a client/server architecture designed over Windows® operating system, which, together with an Ethernet network intercommunicate the different access points, work stations, or the different parking sites and facilities, all this resulting in a centralized management and an efficient business control, apart from guaranteeing a simple adjustment to the new developments in a continuously changing technology market.

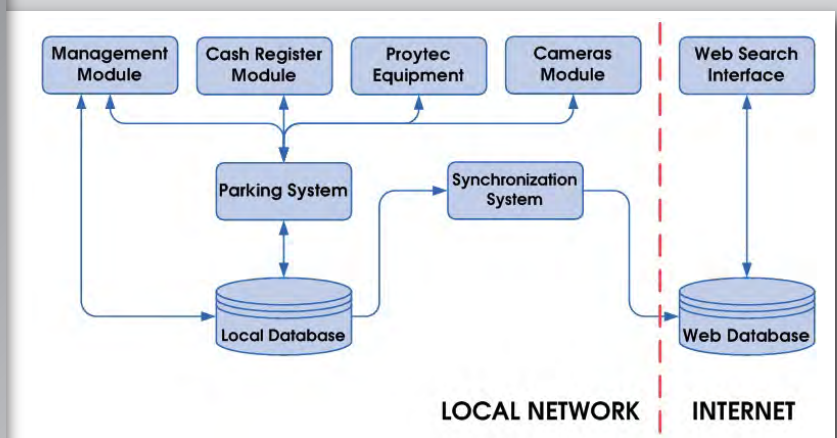
Cutting-Edge Technology

There are no limits when it comes to choosing the plant design which best adjusts to customer's needs, as AP-PRO 100 allows innumerable parking-system configurations, from a simple POS (Point of Sale), manually operated, to a complex automated system with ticket issuing and ticket reading units, barriers, automatic payment machines, with multiple entry and exit accesses, money self-check systems for customers, integration of multi-plants configurations, and the integration with OCR or LPR systems.

Description

The AP-PRO100 system has a Customer Server infrastructure that gathers information on a consolidated database to which you can access from the different software modules according to its functionality.

Simultaneously, it is possible to synchronize the information on the cloud in order to access it from any Internet browser, allowing for multiple parking management.



Platform and Functioning Requirements

- Windows 7 Operating System
- Database Engine: SQL Express 2012 (10Gb)
- Interface Web Technology: WAMP (PHP/MySQL)

Parking Communication Service

It is a Parking Server programme that runs in the background and offers a communication service between the different equipment installed and the system database.

It is responsible for interconnecting the different equipment and system components, among which we can identify the following:

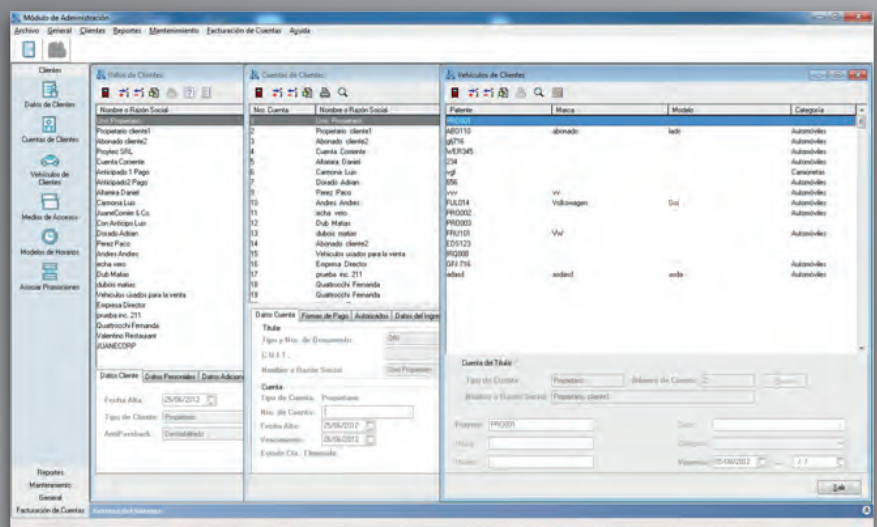
- Entry Column (Ticket Issuing) with a Vehicle Barrier
- Exit Column (Ticket Reader) with a Vehicle Barrier
- Prepaid User Column (only cards) with a Vehicle Barrier
- Barrier Controllers (for manual payment points) with a Vehicle Barrier
- Manual Payment Points
- ATMs
- Ticket Validation Points
- Profile Cameras at entry/exit lanes
- Licence Plate Recognition System
- Parking Guidance Systems

Management Module

This module is used for managing and handling the functioning and operation of the installed parking system as regards user data, customers, equipment, fees, invoicing, etc. At the same time, it provides different informative tools that will be useful as a basis to control system operation and to enhance business utility.

Among the different module functionalities you may find:

- General parking operation parameters configuration, multi-storey car park dimensioning, tolerance time, regional configuration of the system
- Installation and configuration of equipment and payment collection points
- Users and permits management
- Tariff configuration according to schedules and stay time, promotions, additional products and



services. Tariff charts exclusively designed upon customer request.

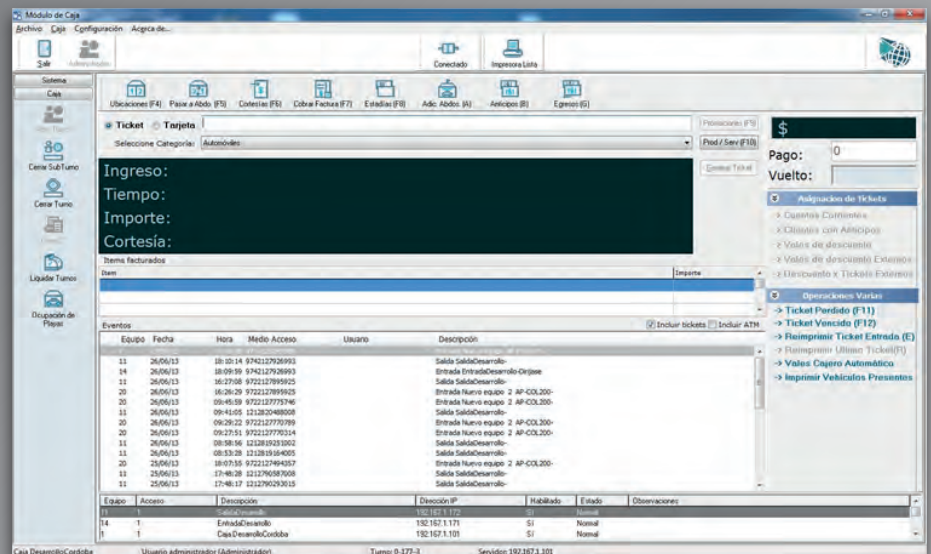
- Different kinds of customer management: owners, prepaid users, checking accounts, advance payment. Invoicing scheme according to related schedule type and models.
- Multilevel structure: Customer > Account > Vehicles > Access means
- Reports Display: a powerful and varied quantity of management, accounting, statistics and technical reports will be an essential tool providing a 100% efficient control over the parking use and getting the most out of its locations.
- Image viewer: each entry/exit system operation as well as its infringements, are recorded in images for its subsequent control
- System maintenance: Data backup, data, image and present vehicles filtering
- Data export to other management systems

Cash Register Module

In the Point of Sale Module, you can manage the parking activity in shifts, getting a clear identification of users operating the system, money collected and equipment activity reports.

This is the car park point of operation where the user can have access to different activities according to his/her permits:

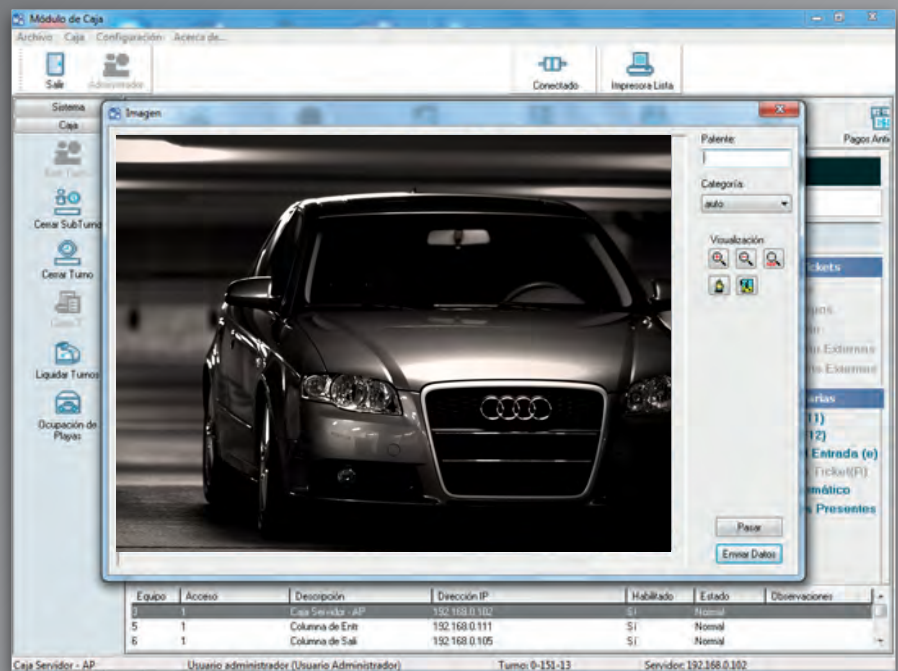
- Work shifts opening, closing and settlement (On-line/Off-line).
- Collecting fees or customer invoices.
- Generating prepaid stays through tickets or proximity cards
- Associating payments with checking account customers, discount coupons, promotions, products, etc.
- Uploading vehicle licence plate and category, before or after its entrance.
- Controlling car park occupancy level in its different lots
- Lost tickets search on the image viewer
- Cash expenses register
- Ticket printing: the system allows you to use different fiscal (tax-purpose) printers as well as desk printers.
- Exclusive Mode: through this function, the PC will be used exclusively for the Collecting Module, guaranteeing the system's proper use and operation.
- Task execution authorization according to user level.



Cameras Module

The system includes a Cameras Module which allows to associate up to 4 cameras per entry/exit lane. Through this module, one can get up to 4 images of each entry/exit operation associated to the corresponding ticket or card, as well as system infringement.

Firstly, it allows to check that the entering vehicle is the same as the one leaving and that the category charged is right. It also serves as a vehicle status register at the moment of the entrance, in case the user reports an incident inside the car park.



You can also configure the system to send an Alert with the vehicle image to the cashier on every entry, allowing the licence plate and category pre-load before printing the ticket.

Web Search Interface

The system has a database synchronization service which uploads all the system information into the cloud. This will enable you to access information or even manage different car parks from any mobile device or PC with Internet access.

This tool allows the owner to view his/her business status online from anywhere in the world.

